

EPM focus environment:

Project Web App feature	Rate of usage
WorkTracker	High
Programs	High
Timesheets	Medium
Portfolio management	Medium
Master projects	High
Project workspaces	Low
Risk management	Medium
Issues management	High
Document management	Medium
Resource management	Medium
Task management	Medium

Courtesy of <http://technet.microsoft.com>

Time Tracking focus characteristics:

- ◆ Minimal use of Project Professional 2013
- ◆ Time and material billing
- ◆ A large number of projects that have fairly few tasks
- ◆ A predictable peak period of usage that corresponds to scheduled timesheet entry in Project Web App

Courtesy of <http://technet.microsoft.com>

Time Tracking focus environment:

Project Web App feature	Rate of usage
WorkTracker	High
Programs	Low
Timesheets	High
Portfolio management	Low
Master projects	Low
Project workspaces	Low
Risk management	Low
Issues management	Low
Document management	Low
Resource management	High

Courtesy of <http://technet.microsoft.com>

Demand Management focus characteristics:

- ◆ A large number of projects that have many assignments
- ◆ A high percentage of project managers
- ◆ Frequent use of Project Professional 2013

Courtesy of <http://technet.microsoft.com>

Demand Management focus environment:

Project Web App feature	Rate of usage
WorkTracker	Low
Timesheets	Medium
Portfolio management	High
Programs	Low
Administrative projects	Low
Collaboration	Medium
Document management	Medium
Risk management	Medium
Issues management	Medium
Resource management	Medium

Courtesy of <http://technet.microsoft.com>

Resource Management focus characteristics:

- ◆ A mixture of work types
- ◆ Need visibility to resource demand

Resource Management focus:

Project Web App feature	Rate of usage
Work Tracker	High
Programs	Medium
Timesheets	Medium
Portfolio management	Low
Master projects	Low
Project workspaces	Low
Risk management	Low
Issues management	Low
Document management	Low
Resource management	High
Task management	Medium

Portfolio Management focus characteristics:

- ◆ A mixture of demand
- ◆ Need visibility to project schedules to plan for future demand
- ◆ Need visibility to resource demand and availability to start the work

Portfolio Management focus:

Project Web App feature	Rate of usage
Work Tracker	Medium
Programs	Medium
Timesheets	Medium
Portfolio management	High
Master projects	Low
Project workspaces	Low
Risk management	Low
Issues management	Low
Document management	Low
Resource management	High
Task management	Medium

What's New or Changed in 2013

Project Comparison

	2003	2007	2010	2013	Pro for 365
Microsoft Fluent user interface, the Ribbon			○	●	●
Contextual right click menu			○	○	○
Zoom Controls	○	○	●	○	○
Backstage™			○	●	●
Project Templates	○	○	○	●	●
Identity management plus SkyDrive integration				★	★
Get started experience for new users				★	★

Included: ○ Improved: ● Not: ★
Courtesy of Microsoft

Project Comparison

	2003	2007	2010	2013	Pro for 365
Custom Fields	○	○	○	○	○
Enhanced copy and paste	○	○	●	○	○
Active/Inactive Tasks			○	●	●
User-Controlled/Manual Scheduling			○	○	○
Top down summary tasks				○	○
Filtering			●	○	○
Auto-complete			★	○	○
Add columns			●	○	○

Included: ○ Improved: ● Not: ★
Courtesy of Microsoft

Project Comparison

	2003	2007	2010	2013	Pro for 365
Master Projects on SharePoint				★	★
Calendar date extended to 2149				★	★
Timeline View			○	●	●
Visual report to share with team		○	○	●	●
Task Path				★	★
Presence with Lync			○	○	○
Create project site – Backstage™				★	★
Task List sync to SharePoint			○	●	●
Publish Project to Project Server/Online				●	●
Included: ○ Improved: ● New: ★					

Courtesy of Microsoft

Project Comparison

	2003	2007	2010	2013	Pro for 365
Continuous data back-up					★
Click-to-run (quick install)					★
Office Store - Apps				★	★
Included: ○ Improved: ● New: ★					

Courtesy of Microsoft

On-Premise vs. Online

Top 10 Benefits of Project Online

1 Go online

Project Online offers flexible plans that help you quickly and easily sign up for the service that best fits your business needs.

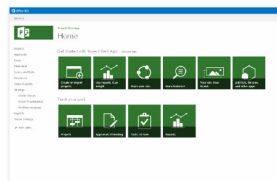
- Get up and running with enterprise-grade reliability and zero upfront infrastructure costs.
- Add teams and projects in minutes with a web-based portal.
- Immediately derive insight about your portfolio with new point-and-click reporting capabilities.
- Stream Project Pro for Office 365, your project management desktop application, directly from the web.

Courtesy of Microsoft

Top 10 Benefits of Project Online

2 Get started quickly

The familiar experience of Project Online improves participation and helps your teams get more done.



- Use the new visual tiles in Project Web App (PWA), your web app to access Project Online, to quickly begin or flex project portfolio management capabilities.
- Utilize the new Start screen in Project Pro for Office 365 to walk through project basics such as organizing tasks, linking tasks, and creating a timeline.
- Enable your teams to work within a familiar environment. Project Online includes SharePoint Online and comes to you through Office 365.

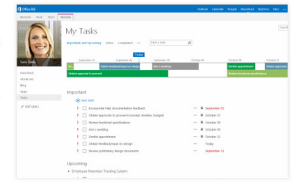
Courtesy of Microsoft

Top 10 Benefits of Project Online

3 Take action

With Project Online you can stay up-to-date in more places and on more devices than ever before.

- See and act on your tasks (including business and personal) in one location.
- Effectively plan and manage tasks in PWA with the help of new scheduling capabilities.
- Keep your teams organized in one location—their project site—where they can view project summaries, documents, tasks, newsfeeds and calendars.
- Access Project Pro for Office 365 from virtually anywhere with Project on Demand.



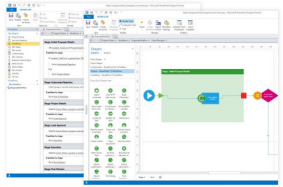
Courtesy of Microsoft

Top 10 Benefits of Project Online

4 Align vision and effort

Project Online enables you to prioritize initiatives, select optimal project portfolios, and deliver on your business strategy.

- Effectively evaluate ideas or measure the strategic contribution of competing requests to determine alignment and streamline project initiation.
- Easily create workflows in Visio and SharePoint Designer to standardize project progression or rejection and improve governance and control.
- Quickly promote a SharePoint Online task list to an enterprise project in PWA.
- Deliver projects successfully by efficiently managing the details of project planning, scheduling, and execution with Project Pro for Office 365.



Courtesy of Microsoft

Top 10 Benefits of Project Online

5 Effectively manage resources

With Project Online you can see what your teams are doing—even when they're managing everyday work or ad hoc projects in SharePoint Online.

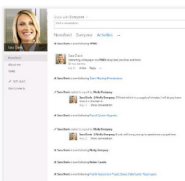
- Sync SharePoint Online task lists with Project Online to report on your team's activities.
- Better manage your project pipeline and what your people are working on by capturing your team's ideas in SharePoint Online task lists and measuring them in Project Online.
- Accurately measure resource utilization and better manage resource allocation that aligns with your strategy.
- Visually manage project-level resource assignments to immediately see the right mix with Project Pro for Office 365.

Courtesy of Microsoft

Top 10 Benefits of Project Online

6 Strengthen everyday collaboration

Project Online binds with the social experiences of SharePoint Online, facilitating discussions, information sharing, and your team's ability to get work done.



- Easily share and keep track of what teams are talking about and working on by following people, sites, tags, and documents with newfeeds.
- Utilize the search capabilities of SharePoint Online to execute everyday work and projects more effectively and find the right information in the right context.
- Take advantage of powerful security features to share information and collaborate with trusted business partners on projects and everyday work.

Courtesy of Microsoft

Top 10 Benefits of Project Online

7 Seamlessly communicate

Project Online delivers new ways to collaborate and communicate, helping improve overall teamwork.

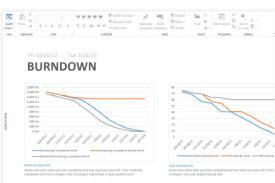
- Hover over an individual's name in your plan to see if a team member is available to talk or instant message (IM) with Lync Online.
- Sync your timeline with your project site with Project Pro for Office 365. You can visually illustrate dates and deliverables to keep everyone informed and organized at-a-glance.
- Discover potential problems before they become real ones through new task path analysis in Project Pro for Office 365.

Courtesy of Microsoft

Top 10 Benefits of Project Online

8 Make data-driven decisions

See summary dashboards or mine and aggregate data, helping you glean further insight and make better decisions.



- Optimize utilization and plan allocation for your organization's resource requirements through the resource center in PWA.
- Look at sample reports in the business intelligence center in PWA to help you get started.
- Quickly mine and aggregate data on many dimensions via self-service access with Excel Services.
- Find great looking reports such as Burndown and Resource Overview in Project Pro for Office 365.

Courtesy of Microsoft

Top 10 Benefits of Project Online

9 Simplify IT

Project Online simplifies IT management by integrating the admin experience with SharePoint Online.

- Utilize Active Directory (AD) synchronization in PWA to choose which AD group contains the teams that you want to make resources.
- Easily give your teams and trusted business partners the right level of access through a new SharePoint integrated security model in PWA.
- Separate IT and business settings—your Project Management Office (PMO) or business sponsor can manage PPM settings without additional assistance from IT.

Courtesy of Microsoft

Top 10 Benefits of Project Online

10 Quickly innovate

A unified experience with other Microsoft cloud services such as SharePoint Online, Exchange Online, Lync Online, and Office 365 helps you quickly act and respond to opportunities.

- Gain a complete, flexible PPM solution by configuring Project Online to address your organization's immediate business needs and longer-term aspirations.
- Utilize apps from the new Office Store and the SharePoint Store to meet unique business needs.
- Develop and deliver apps that help you shave time off discrete processes or connect to proprietary systems.

Courtesy of Microsoft

On Premise 2013 top 10 comparison

- ~~1. Low infrastructure cost with quick startup~~
2. Getting Started – ease of use
- ~~3. Flexibility to access anywhere~~
4. Align vision and effort
5. Effectively manage resources
6. Strengthen everyday collaboration
7. Enhanced collaboration features

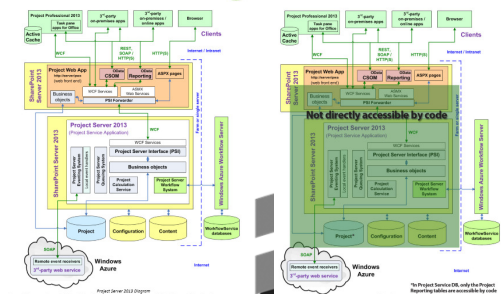
On Premise 2013 top 10 comparison

8. Better reporting and dashboards
- ~~9. Simplified IT Management of Systems~~
- ~~10. Unified experience with other Microsoft Cloud Tools~~

On Premise 2013 Benefits

1. Significantly better reporting options (oData online – severe limitation)
2. Flexibility with customizations
3. Ability to do integrations
4. Easier troubleshooting
5. More flexibility in applying updates and cumulative updates

On Premise 2013 Benefits



Courtesy of Microsoft

On Premise vs. Online bottom line

- ◆ If you are looking for an environment where you do not have to worry about technical maintenance then consider a Project Online environment.
- ◆ If you are looking for an environment where you can have SQL query access to the databases and where you have full control over the content then consider an On-Premises Solution.

Courtesy of Microsoft

SharePoint Integrated vs. Project Web App Permissions

Why SharePoint Permissions Mode?

- ◆ To both simplify permissions and align the permissions configuration with SharePoint Server, the new default SharePoint Permission Mode.
- ◆ It provides users an alternative to the "classic" Project Server permissions model (Project Permission Mode).
- ◆ A new installation of Project Server 2013 automatically starts you in SharePoint Permission Mode.

Courtesy of <http://technet.microsoft.com>

SharePoint vs. Permissions?

- ◆ **SharePoint permission mode** In this mode a special set of SharePoint security groups are created in sites associated with Project Server 2013. These groups give users varying levels of access to projects and Project Server functionality. SharePoint permission mode is new for Project Server 2013.
- ◆ **Project permission mode** In this mode, Project Server provides customizable security groups and other functionality that is distinct from SharePoint groups. This is the same security mode that was available in Project Server 2010.

Courtesy of <http://technet.microsoft.com>

Comparison of security modes in Project Server 2013

Feature	Permission mode	
	SharePoint	Project
Unified security management through SharePoint Server <ul style="list-style-type: none"> Security is managed in Sharepoint rather than Project Server. You cannot edit default permissions to any of the Sharepoint groups, nor can you create additional custom groups, categories or RBS. 	×	
Permissions inheritance for PWA and Workspaces	×	
Direct authorization against Active Directory security groups	×	

Courtesy of <http://technet.microsoft.com>

Comparison of security modes in Project Server 2013

Feature	Permission mode	
	SharePoint	Project
Claims-based authorization	×	
Manage authorization by role-based groups	×	×
Extensible and customizable	×	×
User delegation		×
Ability to secure work resources		×

Courtesy of <http://technet.microsoft.com>

Comparison of security modes in Project Server 2013

Feature	Permission mode	
	SharePoint	Project
Impersonation		×
Security filtering using the Resource Breakdown Structure		×
Custom Security Categories		×

Courtesy of <http://technet.microsoft.com>

Other beneficial information

- ◆ Because SharePoint Permission Mode does not require synchronization between Project Server users and SharePoint sites, SharePoint Permission Mode uses fewer system resources and allows for greater scalability.
- ◆ New Project Web App instances use the SharePoint permission mode by default. If you have more than one instance of Project Web App, each site can use a different permission mode.

Courtesy of <http://technet.microsoft.com>

Other beneficial information

- ◆ Switching between SharePoint Permission Mode and Project Permission Mode deletes all security-related settings.
- ◆ One of the benefits of using SharePoint Permission Mode is that it attempts to separate IT and PMO roles.
- ◆ SharePoint Permission Mode creates SharePoint groups that directly correspond to the Project Server 2010 default Security Groups.

Courtesy of <http://technet.microsoft.com>

Migration Path

Migration Path Planning

- ◆ What version are you coming from
 - ◆ 2010 – direct path (db upgrade)
 - ◆ 2007 - choices to make
 - ◆ 2003 - choices to make
- ◆ Are there any new features or process that the organization would like to take advantage of using?

Migration Path Planning from 2003

- ◆ Determine how much data you are wanting to bring forward
- ◆ Typically more clean-up involved
- ◆ Need to fully understand features gaining through versions that will be skipped
- ◆ Data integrity issues – MS Project's functionality changes, enhancements, new features could impact data.

Migration Path Planning from 2007

- ◆ Determine how much data you are wanting to bring forward
- ◆ Are Activity Plans highly used feature?
- ◆ Are Resource plans highly used feature?
- ◆ Database migration
 - ◆ 2010 backward compatibility mode
- ◆ Database structure change

Migration Path Planning from 2010

- ◆ Determine how much data you are wanting to bring forward
- ◆ Are Resource plans highly used feature?
- ◆ Database migration
 - ◆ 2010 backward compatibility mode
- ◆ Database structure change
- ◆ Most effective environment to convert manually if have few projects to move and no resource plans.



What is at stake with a migration

- ◆ Just managing process – no tie out to finance, cap exp reporting, integrity of cost and data (timesheet data)
- ◆ Functionality changes - If you have a complete understanding of all that has come and gone between version, and understand how to do data analysis in test migration.
- ◆ Data prep is critical in any migration!



Questions?

